

Isolation Transformer



Technical Specifications

Capacity	: 1 KVA - 25 KVA 1 Phase : 3 KVA - 500 KVA 3phase
Primary Voltage	: 200/230 V 1 Phase : 380 V / 400V / 415 V 3 Phase
Secondary Voltage	: 110 V / 230 V 1 Phase : 220 V / 380 V / 400 V 415 V 3 Phase
System Connections	: Delta / Star : Star / Star
Ratio	: 1:1 and 2:1
Regulation	: Better than 3.5%
Power Factor	: 0.75 Lead to 0.75 lag
Di-electric Strenght	: 3 KV for 60 Sec
Insulation Resistance	: Better than 1000 Mega Ohms
Coupling Capacitance	: 0.01 PF
Leakage Current	: less than 20 Micro Amps
Common Mode Attenuation	: 100 Db / 120 Db
Construction Standards	: As per IS 2026 Part I & II
Type of constructions	: Closed Type / Open Type
Operating Temperature	: 0°C to 45 C °
Type of cooling	: Natural air / Forced air



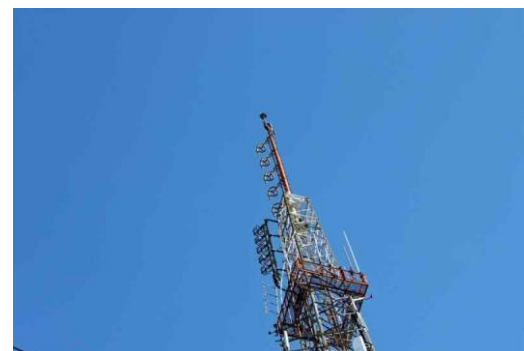
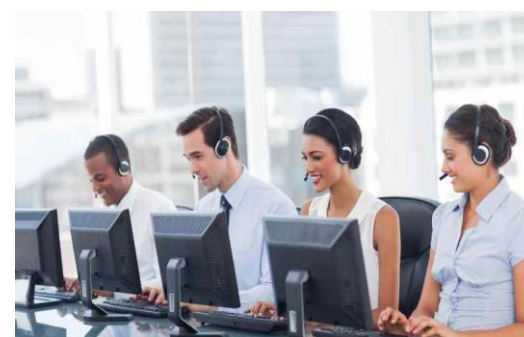
Servo Stabilizers - Air & Oil Cooled



Technical Specifications

Capacity	: 1 KVA - 25 KVA 1 Phase : 3 KVA - 150 KVA 3 Phase [Air Cooled] : 3 KVA - 1500 KVA 3 Phase [Oil Cooled]
Input Voltage Range	: 170 V - 270 V AC 1 Phase
Other Input Voltage Range	: 340 V - 460 - V AC 3 Phase
Out Voltages	: 295 V - 465 V AC 3 Phase : 360 V - 460 V AC 3 Phase
Output Voltage Regulation	: + 1% at No Load- Full Load
System	: Unbalanced 4 Wire System
Operating Frequency	: 47 Hz - 53 Hz
Speed of Correction	: 70 V / Sec - Phase to Phase : 35 V / Sec - Phase to Neutral
Wave Form Distortion	: Nil
Output Wave Form	: True Reproduction of input
Insulation	: Class "B" & "F"
Operating Temperature	: 0°C - 45 c Ambient
Type of Cooling	: Naturally Air Cooled up to 150 KVA 3 Phase : Oil Cooled up to 1500 KVA 3 Phase
Short Circuit Period & Percentage	: 300 % for 250 m. sec
Mode of Control	: Automatic / Manual
Over Load Capacity	: 120 % for 10 Min.
System Construction	: As Per IS : 9815
Protections	: Low Voltage Protection High Voltage Protection Short Circuit Protection Over Load Protection Single Phase Preventor Phase Reversal Protection
Controls	: Input ON / OFF - MCB / MCCB Output ON - AUTO / MANUAL
Indications	: Input- ON, Input-HIGH, Input-LOW Output-ON, Output-HIGH, Output- LOW OUTput- OVER LOAD Phase Reversal-Cut Off
Metering	: LED display to read following parameters I/P VOLTAGE, O/P CURRENT & Frequency
Optional Features	: Frequency Trip (High / Low) : MCB / MCCB for Output : Surge / Spikes Suppressor : Line Filters : By- pass Switch

Applications



Servo Stabilizers - Air & Oil Cooled

Q QUALITY POLICIES

- Components used are as per the IES
- All Internal components are tested at every stage of assembly of the equipment
- Final equipment is subjected for accelerated life test to rectify and replace any weak components

SALIENT FEATURES:

- Solid state control circuits, no relays, no warm-up time for high reliability
- Every unit is 'Soak tested' for 48 hours to ensure trouble free operation
- Quick response time 10 m.sec
- AC Synchronous motor drive for high reliability (DC Motor Operation)
- All transformers are copper-wound on CR Laminations and double vacuum impregnated for high efficiency, low losses and low temperature rise
- Excellent regulation as high as $\pm 1\%$
- Reputed make ICs and components are used for high reliability
- Rugged construction
- Very high efficiency

